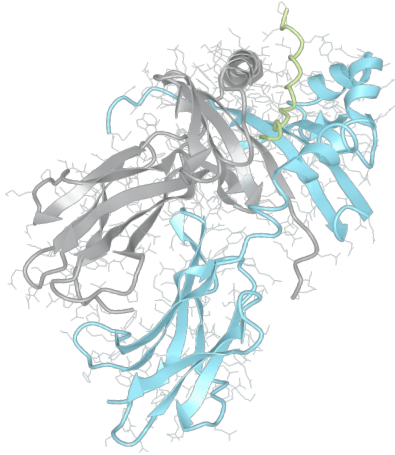


# Product datasheet



## sHLA– DQB1\*02:02 DQA1\*02:01

DQB1\*0202, DQB10202, DQB1\*02, DQB02, DQ2  
DQA1\*0201, DQA10201, DQA1\*02, DQA02

|                         |                   |
|-------------------------|-------------------|
| <b>Serological Name</b> | DQ2               |
| <b>Peptide Load</b>     | Endogenous        |
| <b>Modification</b>     | Unmodified        |
| <b>Conjugation</b>      | Unconjugated      |
| <b>SKU</b>              | DQB10202/DQA10201 |

### Product Description

|  |   |
|--|---|
| <b>Allele Name</b>                         | DQA1*02:01<br>DQB1*02:02  |
| <b>HLA Class</b>                           | HLA Class II  |
| <b>HLA Gene Locus</b>                      | HLA-DQ  |
| <b>Alternative Allele Name A Chain</b>     | DQA1*0201, DQA10201, DQA1*02, DQA02   |
| <b>Alternative Allele Name B Chain</b>     | DQB1*0202, DQB10202, DQB1*02, DQB02, DQ2  |
| <b>Description</b>                         | Recombinant, truncated Class II soluble Human Leukocyte Antigen (sHLA), naturally folded and glycosylated, loaded with endogenous peptides. |
| <b>Serological Name</b>                    | DQ2   |
| <b>Serological Split</b>                   | –   |
| <b>Allele Frequency [World Population]</b> |   |
| <b>A chain</b>                             | 10.1%   |
| <b>B chain</b>                             | 7.5%  |

### Associated products

[DQB10202/DQA10201bio](#)  
[DQB10202/DQA10201pe](#)

## Product Specification

|                                    |  |
|------------------------------------|--|
| <b>Product name</b>                | HLA-DQB1*02:02/DQA1*02:01  |
| <b>HLA Species</b>                 | Human  |
| <b>Host Cell Line Species</b>      | Mouse  |
| <b>Clone Designation</b>           | EP185-E12  |
| <b>Tail Specification</b>          | ZP   |
| <b>Peptide Load</b>                | Endogenous   |
| <b>Modification</b>                | Unmodified   |
| <b>Conjugation</b>                 | Unconjugated   |
| <b>Complexity</b>                  | Monomer  |
| <b>Protein Format</b>              | Recombinant, truncated, zipper-stabilized, soluble, non-modified, non-labeled, endogenously loaded |
| <b>Storage Temperature</b>         | 4°C (This product should be stored undiluted)  |
| <b>Form</b>                        | Liquid   |
| <b>Concentration</b>               | 1000.0 µg/ml   |
| <b>Formulation</b>                 | PBS/0.02% Sodium Azide   |
| <b>pH</b>                          | 7.4  |
| <b>Purification Method</b>         | Affinity Chromatography  |
| <b>Grade</b>                       | Research Use Only [RUO]  |
| <b>Authentication Verification</b> | Sequence Based Typing  |

## Protein Sequences

|                             |   |
|-----------------------------|---|
| <b>Alpha Chain Sequence</b> | EDIVADHVAS YGVNLYQSYG PSGQFTHEFD GDEEFYVDLE RKETVWKLPL FHRLR.FDPQ<br>FALTNIIVLK HNLNLIKRS NSTAATNEVP EVTVFSKSPV TLGQPNTLIC LVDNIFPPVV<br>NITWLSNGHS VTEGVSETSF LSKSDHSFFK ISYLTFLPSA DEIYDCKVEH WGLDEPLLKH<br>WEPEIPAPMS EVDGGGGGAQ LEKELQALEK ENAQLEWELQ ALEKELAQ          |
| <b>Beta Chain Sequence</b>  | RDSPEDFYVQ FKGMCYFTNG TERVRLVSR S IYNREEIVRF DSDVGEFRAV TLLGLPAAEY<br>WNSQKDILER KRAAVDRVCR HNYQLELRTT LQRRVEPTVT ISPSRTEALN HHNLLVCSVT<br>DFYPAQIKVR WFRNGQEETA GVVSTPLIRN GDWTFQILVM LEMTPQRGDV YTCHVEHPSL<br>QSPTTVEWRA QSESAQSKVD GGGGAQLKK KLQALKKKNA QLKWKLQALK KCLAQ |

## Related Products

[DQB10201/DQA10201](#)  
[DQB10301/DQA10201](#)  
[DQB10602/DQA10102](#)  
[DQB10302/DQA10201](#)

## Applications

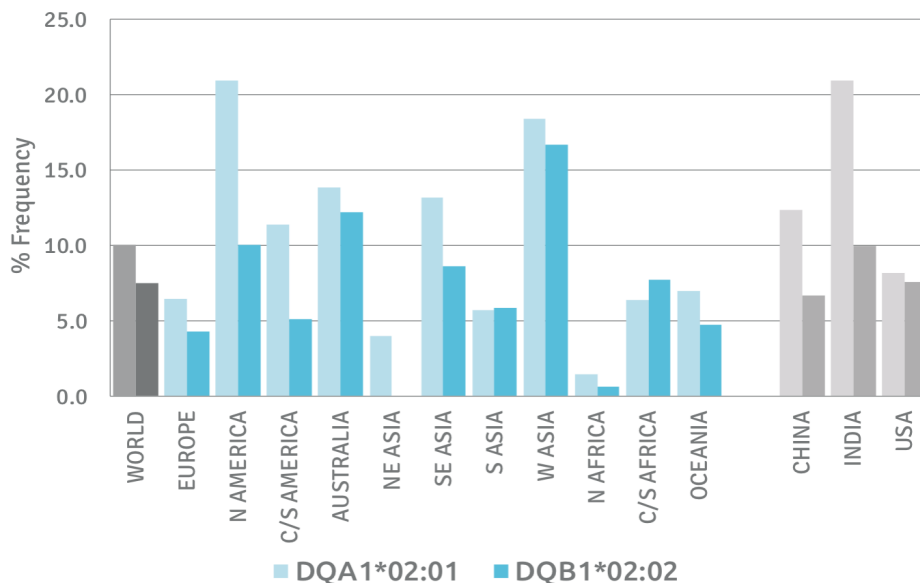
HLA Sandwich ELISAs  
 HLA Direct ELISAs  
 HLA-Sera Antibody Assays  
 HLA Controls in ELISA Assays  
 HLA Assay Standards  
 HLA Blocking Assays  
 HLA Neutralizing Assays  
 HLA Competition Assays  
 HLA Bead Assays  
 HLA Immunization Procedures

## Recommended Antibodies

-

## Allele Frequency

### Worldwide Allele Frequency



Please note:

ALL PRODUCTS ARE FOR RESEARCH USE ONLY. NOT FOR COMMERCIAL USE IN DIAGNOSTIC PROCEDURES.  
 For more information, please visit our Policies section on our website. For licensing inquiries, please contact

[licensing@hlaprotein.com](mailto:licensing@hlaprotein.com)

HLA Protein  
 PURE PROTEIN LLC

**Eplet Assignments**

**DQB1\*02:02**

| Eplet | Polymorphic Residues     | Antibody Reactivity |
|-------|--------------------------|---------------------|
| 3S    | 3S                       |                     |
| 9Y    | 9Y                       |                     |
| 13GM  | 13G14M                   |                     |
| 23R   | 23R                      |                     |
| 26L   | 26L                      |                     |
| 45G   | 45G                      |                     |
| 52LL  | 52L 55L 28S 30S 37I      | Yes                 |
| 56P   | 56P                      |                     |
| 56PA  | 56P57A                   |                     |
| 66D   | 66D67I                   |                     |
| 66DR  | 66D67I70R                |                     |
| 75V   | 75V                      |                     |
| 77R   | 75V77R                   | Yes                 |
| 84QL  | 84Q 86E 87L 89T 90T 125A | Yes                 |
| 130R  | 130R                     |                     |
| 135G  | 135G                     |                     |
| 167R  | 167R                     |                     |
| 182S  | 182S                     | Yes                 |
| 185T  | 185T                     |                     |
|       |                          |                     |
|       |                          |                     |
|       |                          |                     |
|       |                          |                     |
|       |                          |                     |
|       |                          |                     |
|       |                          |                     |
|       |                          |                     |
|       |                          |                     |
|       |                          |                     |
|       |                          |                     |
|       |                          |                     |
|       |                          |                     |
|       |                          |                     |
|       |                          |                     |
|       |                          |                     |
|       |                          |                     |
|       |                          |                     |
|       |                          |                     |
|       |                          |                     |
|       |                          |                     |
|       |                          |                     |
|       |                          |                     |
|       |                          |                     |

**Eplet Assignments**

**DQA1\*02:01**

| Eplet | Polymorphic Residues | Antibody Reactivity |
|-------|----------------------|---------------------|
| 2D    | 2D 199A              | Yes                 |
| 25FT  | 25F26T               |                     |
| 40E   | 40E                  | Yes                 |
| 40ERV | 40E41R45V            |                     |
| 47KHL | 47K52H54L            | Yes                 |
| 61FT  | 61F 64T 55R          | Yes                 |
| 66IL  | 66I69L               |                     |
| 75I   | 75I 161D 163I        |                     |
| 75IL  | 75I76L               |                     |
| 76L   | 76L                  |                     |
| 129H  | 129H                 |                     |
| 160A  | 160A                 |                     |
| 160AD | 160A161D             |                     |
| 175E  | 175E                 |                     |
|       |                      |                     |
|       |                      |                     |
|       |                      |                     |
|       |                      |                     |